

REALTEC LISTING  
FOR SALE/LEASE



**REALTEC**  
COMMERCIAL REAL ESTATE SERVICES

More Listings. More Deals. More Experience.



**OWNER  
FINANCING!**

**3780 E. 15TH STREET, UNIT 101**  
LOVELAND, COLORADO

**PROPERTY INFORMATION**

**CONDO SIZE:** 2,476 SF  
**SIGNAGE:** MONUMENT & LIGHTED  
BUILDING SIGNS  
**INTERNET:** TI  
**FEATURES**

- Great Class A building East Eisenhower Corridor
- Beautiful building on major intersection

**PRICING INFORMATION**

**SALE PRICE:** \$445,680 (\$180/SF)  
**SF FOR LEASE:** 2,476 SF  
**LEASE RATE:** \$13.00/SF NNN  
**JANITORIAL:** YES

**Ken McCrady**  
970.222.5945  
kenm@realtec.com

**Jack Trethewey**  
970.217.1027  
jackt@realtec.com

View more Realtec listings at:  
[www.realtec.com](http://www.realtec.com)

Realtec · 350 E. 7th Street, Ste. 2 · Loveland, CO 80537 · Ph: 970.593.9900 · Fax: 970.593.9901

Information contained herein is not guaranteed. Buyer/Tenant and Seller/Landlord are advised to verify all information. Price, terms and information are subject to change.

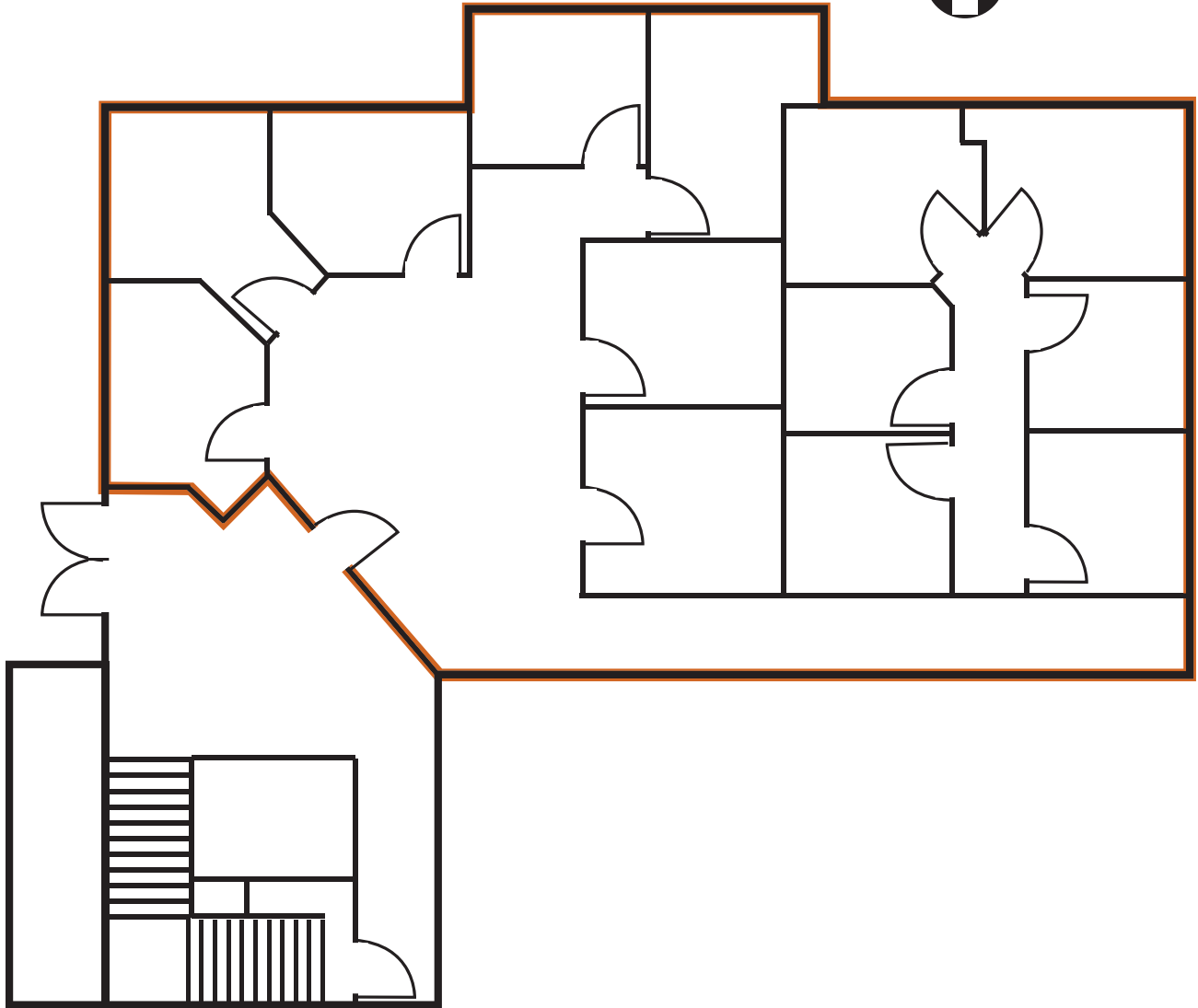
041310

3780 E. 15TH STREET, UNIT 101  
LOVELAND, COLORADO

REALTEC LISTING  
FOR SALE/LEASE



## Floor Plan



**REALTEC**  
COMMERCIAL REAL ESTATE SERVICES

More Listings. More Deals. More Experience.

350 E. 7th Street, Ste. 2 · Loveland, CO 80537 · Ph: 970.593.9900 · Fax: 970.593.9901 · [www.realtec.com](http://www.realtec.com)